

## 2020 | 2021 ANNUAL REPORT



## KIRKCALDY AREA REACHOUT TRUST



*We're not keeping this to ourselves,  
we're passing it along to the next generation -  
God's fame and fortune,  
the marvellous things he has done.*

Psalm 78:4 (MSG)



The Kirkcaldy Area Reachout Trust exists to provide support to schools and churches with the presentation of the Christian message among children & youth in the Kirkcaldy Area.

Our activities in schools contribute to the spiritual development of children by helping them learn about Christian beliefs, see authentic faith in action and understand their own beliefs and the beliefs of others.

## **Working in Schools | Partnering with Churches**

- Within schools we support the Religious and Moral Outcomes within the Curriculum for Excellence.
- We run Scripture Union Groups and after school activities in Schools providing the opportunity to explore the Bible and the Christian faith.
- We are here to support and work with School Chaplains.
- We are here to support and provide training for local churches as they develop Children and Youth work.

KART is part of the Scripture Union Associate Worker scheme and receives valuable advice and support from Scripture Union Regional Worker Bruce Lockhart.

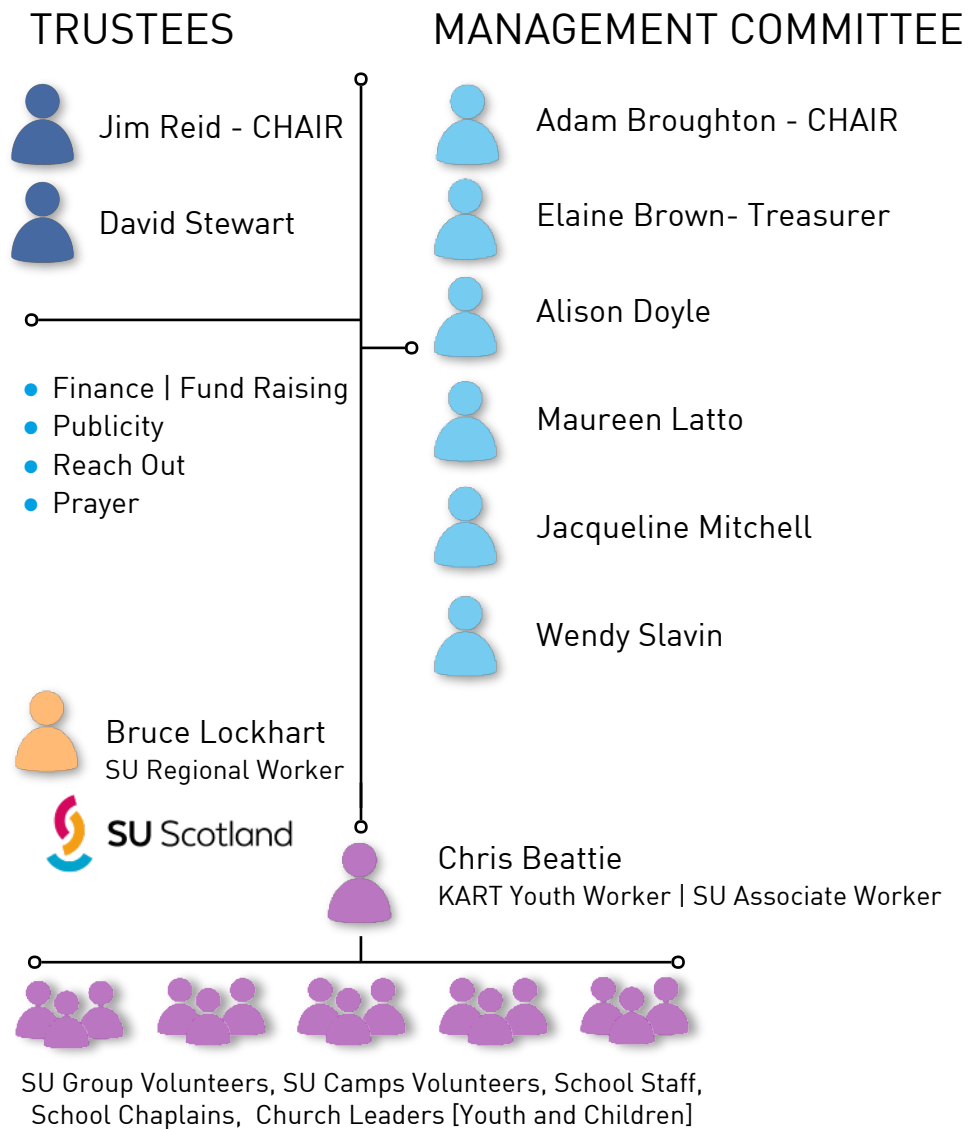
Whilst Chris Beattie is the KART full time paid worker, the work relies heavily on many people volunteering, praying and financially giving.

The Trustees are grateful to God for His provision of gifted and willing people who serve on the Management Committee and beyond.



## ORGANISATION STRUCTURE

Chris Beattie is the KART Youth Worker and the only employee. The Management Committee and Trustees are all volunteers. They meet 6 times a year to organise and plan the work of The Trust.



## Will you consider joining us?

Do you have some time to spare?

Are you a young person who would like some voluntary experience to improve your CV?

Any time you give and whatever commitment you can offer will help to make a huge positive (and spiritual) impact in the lives of children and young people.



## CHAIR OF TRUSTEES REPORT

Jim Reid

Dear Friends,

Many groups doing some forward planning at the end of the last century, made use of the metaphor of “2020” vision to help to focus clarity of planning, action and hoped-for outcomes. Now, looking back on the real 2020, we’re probably glad that we can consign it to history, learn our lessons, move on and trust the Lord in an even deeper way after all that we’ve come through.



We’re so grateful to God for the constancy of his care in maintaining KART’s witness and Chris’s work through all the limitations of school closures and then schools being open but initially closed to “visitors”.

Especially for the prayers, support and financial encouragement of all our supporters, both churches and individuals: thank you deeply. Furlough was an experience for many and for Chris in particular but now that is past, we pray on for new opportunities of outreach and service.

I have fond and vivid memories of SU CEO, Robin McLellan, playing piano along with Steve White in worship in Kinghorn Church: such beauty and harmony! I want to close with a quote from his column in the latest @SU magazine:

*“We believe that God is able to do immeasurably more than we can ask or imagine. That’s why we will pour time and effort into our work at SU Scotland. It’s what we’ve seen happening during the pandemic and we pray for new and surprising ministry opportunities as we look to the future”*

Amen to that for SU, KART and all our churches!

Blessings, Jim.

## CHAIR OF MANAGEMENT COMMITTEE REPORT

Adam Broughton

Although in many ways this past year has continued to be a challenge for us, due to the on-going COVID situation, we continue to be encouraged with all that's happening as we share the message of Jesus Christ with the next generation of children and young people.

Challenges of not being able to visit schools and churches, as much as we would like, have been met with new and fresh opportunities. Uniquely by means of on-line video assemblies and the 'Walk through the Bible' [WttB] Old Testament lessons on video download, we have continued to resource existing schools and also it has enabled us to introduce KART and WttB to new schools in the area.

We are grateful for this past year for the time it has afforded Chris to step back for a little while and plan and prepare for getting ready for a return to meeting the needs of schools and church ministries in the coming year. It has been a time of re-thinking our priorities, praying for the work and looking how we can encourage others to be involved.

We would especially pray that you and others might take up the opportunity to become trained presenters of WttB so that you too can bless your local primary school P6 and P7 pupils with this unique program. Why not get in touch with Chris and find out how you can get involved.

For me, in my nearly 9 years here in Kirkcaldy, for the first time it was a real joy to experience different Christians from churches in Kirkcaldy and the surrounding area coming together to serve in a week's mission in the Summer. It was an immense privilege to share in this work together in different churches and locations. We're praying that we can build on this in future days as we help one another take the message of Jesus to the next generation.

So many challenges but also many opportunities we can build on as God continues to bless and use the work of KART, the Church in Kirkcaldy and us for his glory. We are thankful to God for your partnership in so many ways. Blessings, Adam.



# KART WORKER REPORT

Chris Beattie



*In that wonderful day you will sing: "Thank the Lord! Praise his name! Tell the nations what he has done. Let them know how mighty he is! <sup>5</sup> Sing to the Lord, for he has done wonderful things. Make known his praise around the world.*

*Isaiah 12:4-5 - (NLT)*

THANK YOU to all who have given towards the work of KART this year, whether through finance, time or prayer your continued support has enabled KART to provide opportunities to serve and share with the children and young people in the Kirkcaldy area. Our work in the last year has continued to focus on the tag line -

## **Working in Schools | Partnering with Churches**

### **Working in Schools**

The schools work has been somewhat limited in the last year due to COVID-19 but we have been able to carry-on resourcing the schools with items that can be used to help the School Curriculum and opportunities for Religious Observance.

- Walk through the Bible Videos – The videos for WttB were promoted to all the local schools within the area. Four Kirkcaldy schools took up the option and used the material for their upper school classes
- Light-up Christmas, Colour in Easter and Move – These three interactive cross-curricular resources were produced for Primary 7 pupils and were put together as a joint initiative of SU Ireland and SU Scotland.

- Christmas Card Competition – KART ran a Christmas Card competition with entries coming from Fair Isle Primary, Kirkcaldy North Primary and the local Church groups.
- Videos for School Assemblies – Working with local chaplains, I managed to produce a number of video resources for Primary Schools and Viewforth High School. The videos were designed to be engaging, fun and memorable. Any feedback we received was positive, whether through pupils or staff.
- Chaplains Meet-up – KART provided two opportunities for the local School Chaplains to meet and chat over a ZOOM call. We discussed the current school relations, chatted about possible resources and took the time to pray for one another.

Unfortunately there haven't been any SU groups since March 2020 due to COVID but we were able to run a Juice bar at Viewforth High School in June 2021. We had over 130 young people chatting and getting a free juice cocktail. It was great to be able to interact with the young people of the school.

*Thankfully over the last few weeks one of the local Schools (Fair Isle P.S.) invited me back in to the school, which has resulted in giving an assembly talk to each class (15 classes!) and leading a block of Walk through the Bible sessions for the Primary 7 classes throughout November. Hopefully this is the beginning of schools reopening their doors to the local chaplains. In the next year we plan to expand the number of 'Walk through the Bible' schools, so pray with us to continue developing this area of KART.*

## Partnering with Churches

The CONNECT group that we set-up last year (for 11-16 year olds of local churches) continued throughout lockdown, we have managed to have four events:- A 2020 Quiz (online in December), An escape room (online in April), Archery Tag (led by SU Scotland in July in Torbain) and a Gameshow night in October at Newcraigs Evangelical Church.

The Archery Tag in July was a 6 hour event which included earthball and parachute games, as well as lunch and exploring the story of Peter's denial and restoration. The young people all went home happy and the leaders were buzzing as it had been for many their first face to face contact event in over a year.



## JUNGLE ADVENTURE HOLIDAY CLUB

A Jungle 'holiday club' Adventure took place in August with 50 children attending throughout the week. Nine churches from across the Kirkcaldy area helped the mission in some form. This was a great example of churches working together. We had three days with three different locations:

Monday – Pathhead Parish Church

Wednesday – Newcraigs Evangelical Church

Friday – Kinghorn Parish Church

Over the days there were plenty of games, challenges, crafts, drama, songs and dancing for us all to share in. We also spent time exploring the Bible using the SU material 'Jungle Adventure' which looked at the events leading up to Jesus' death and resurrection, the children gave good responses as we explored the stories together. We had a great time with our Photo Hunt challenge and wet games.



We have had the joy of being involved in the SU Activity days at Lendrick Muir in November and June. Over 12 young people from the Kirkcaldy area managed to attend these events where they enjoyed activities such as Bungee Trampoline, High Ropes and the King Swing (A very large swing) as well as asking big questions about God and the Universe.

### Joy Unlocked

On the 31<sup>st</sup> July, KART representatives were able to join with the Salvation Army as they celebrated the move to their new building on Hayfield Road. Although the weather wasn't great, it was a good fun day with plenty of stalls and activities for people to engage with as well as the café. The church was officially opened by the Fife Provost Jim Leishman.

Another different year but we will continue to partner with local churches and use new methods to maintain the importance of exploring the significance of Jesus in all of our work.

**We will tell the next generation about the glorious deeds of the LORD,  
about His power and the mighty wonders He has done.**

**Psalm 78:4**



## KART PRAYER GROUP

Judy Paterson

Some time ago I was asked if I would like to join the KART prayer group. As a former teacher and one who as a child was steeped in the learning by rote method of teaching children the scriptures, the well known and most important passages and psalms and knowing how much this knowledge has impacted my life, I was keen to understand what Bible teaching the children were getting these days.

The KART prayer group meets fairly regularly to discuss what's going on in Kirkcaldy and to support and encourage Chris Beattie and his team in all they are endeavouring to do. I am happy to report that great work is being done by the KART group and Chris especially. We've been hearing how the Connect group of teenagers are meeting to enjoy fun and fellowship and how the SU camps have taken place and more are planned.

These times away at Lendrick Muir are a wonderful opportunity for the children to have a safe, friendly and challenging break away and a great opportunity to learn more about the love of God. We are always encouraged to hear how the WttB plans are being arranged and implemented of course, and that all the schools have received promotional packs of WttB.



**PRAYING  
FOR YOUR  
SCHOOL**

We hope and pray that these will be studied and well used by all the schools. Other activities are being planned and we hope as many schools as possible will become involved. As a prayer group we continue to support all those who are trying to help the

young people in Kirkcaldy to grow deeper in their faith and have a better understanding of the Scriptures as we older members had when we were children.

I am very grateful to the prayer group for opening my eyes to how fortunate our schoolchildren are here in Kirkcaldy and I look forward to supporting them in prayer in the weeks and months to come. Roll on the challenges!!

**A group of us are praying for our local schools. Interested? If so, join us!**

## FUNDRAISING

Maureen Latto



Church life as you know has been virtual so ways of supporting us has been impacted. Also we couldn't run our fundraisers where you are all able to take part. So this years Virtual Kiltwalk over the weekend of 23rd - 25th April was much welcomed.

A massive thank you for your support. Your donations of £2318 were topped up generously by 50% from the Hunter Foundation therefore we received in total £3477.71.

Chris completed his marathon over the weekend assisted by his beautiful wife and girls.



MAUREEN &  
MARGARET



DOUGIE



MAUREEN, EMILY &  
KAREN

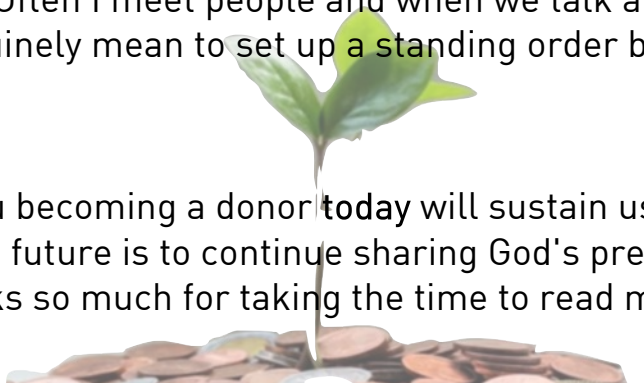
I decided to do a triathlon and the walking was accompanied by my friend Margaret. I cycled with my husband Dougie and supported by dear Karen and Emily on a swim. It was a fantastic weekend, the sun shone brightly and the wind was behind us.

Taking part in this marathon was awesome and God willing next year more folk will join in.

Our income has been affected and this gave us a boost. We needed your support and you all stepped up to the challenge. We thank you so much for your encouragement, generosity and kindness.

I have an appeal: KART relies totally on regular funding from individuals, pledges/offerings from local churches and grants. If you can spare a little regularly it would be appreciated. Often I meet people and when we talk about KART it is often said that they genuinely mean to set up a standing order but forget as daily life gets in the way.

We're now in our 12th year and you becoming a donor today will sustain us in our work going into the future. The future is to continue sharing God's precious word with our young people. Thanks so much for taking the time to read my plea. (Maureen)



## TREASURER'S REPORT

Elaine Brown

Year Ended 31st March 2021

Our financial year ended with our current account balance of £21,565.76 and £15,014.77 in our reserve account. Our total income for the year is £37,093.76 and our expenditure is £32,156.57 giving us a surplus of £4,937.19.



### Our income is made up as follows

GRANTS/TRUSTS	£
• Presbytery Ministry & Mission via Pathhead PC	6500.00
• AllChurches Trust	500.00
• Swinton Paterson	500.00
• Souter Charitable Trust	2000.00
	<b><u>9500.00</u></b>
<b>JOB RETENTION SCHEME</b>	<b><u>13588.10</u></b>
<b>CHURCH PLEDGES</b>	
• Newcraigs Evangelical	2400.00
• Kinghorn Parish	1000.00
	<b><u>3400.00</u></b>
<b>DONATIONS BY REGULAR GIVING</b>	<b><u>8,276.00</u></b>
<b>FUNDRAISING</b>	
• Easyfundraising	31.53
• Half Marathon (c/o from last year)	145.00
	<b><u>176.53</u></b>

<b>DONATIONS FROM INDIVIDUALS</b>	<b><u>227.00</u></b>
-----------------------------------	----------------------

**MISC**

- |                                   |         |
|-----------------------------------|---------|
| • Gift Aid reclaimed              | 1911.81 |
| • Bank Interest (reserve account) | 6.14    |
| • Bank Interest                   | 8.18    |

**1926.13**

<b>TOTAL INCOME</b>	<b><u>37093.76</u></b>
---------------------	------------------------

**EXPENDITURE**

Our outgoings for the year are **£32156.67**. Payments associated with KART's activities are broken down as follows.

Salary, NI, Pension, Insurance	26,167.98
Worker's expenses	31.43
Office rent and phone	1,221.12
Youth Events and Camps (covid)	0.00
SU Associate Worker Fee	2,500.00
Other expenses and overheads:	2,236.04

(Telephone, stationery, post, public liability & charity ins,

Printing, photocopying, resources, auditor fee, website

Equipment consumables for youth events)

<b>TOTAL EXPENDITURE</b>	<b><u>32,156.57</u></b>
--------------------------	-------------------------

During this financial year ending 31<sup>st</sup> March 2021 we were successful in receiving a grant of £2,000 from the Souter Charitable Trust, £500 from AllChurches Trust and £500 from Swinton Paterson. Due to the Covid pandemic there was no fundraising.

**Proposed Budget for 2021/2022**

Our budget for 2021/2022 shows a deficit of £11905. We are uncertain about Presbytery's Mission Fund being unable to continue their annual grant to us. We envisage our expenditure to be £36,120.00 and our income to be £ 24,215.00. We have also budgeted for fundraising of £5,300, over £3,500 of which has already been raised. We will continue to apply for grants from trusts to bridge our deficit although it is becoming increasingly more difficult to obtain funding as we are competing against thousands of charities. KART currently has 26 individual supporters who give by standing order which is 23% of this year's income. We continue to **appeal** to local Christians & Churches to support the work of KART committing to regular giving for us to keep reaching out to our young people without financial concerns.





## EVENTS FOR 2022

SAVE THE DATE

# New Testament in a...



**NT** LIVE

SPRING 2022  
Newcraigs Church



**WALK  
THROUGH  
THE  
BIBLE**

Bring your **RME**  
**lessons alive** with an  
exciting **FREE resource**  
for your school



## The Life Exhibition

The story of Jesus - Kids style

EASTER 2022



[www.lifeexpo.org.uk](http://www.lifeexpo.org.uk)

# ARE YOU INTERESTED IN HELPING KART?

- Serve and support on the Management Committee. Members serve for 3 years.
- Help establish, support or lead an SU group in a school near you. We are always looking for volunteers to work with Chris.
- Become a 'Prayer Champion' in your church. We would like to have every school prayed for on a regular basis. Keep your church up to date with news and be part of a growing network of prayer.
- How about having a soup lunch after church, bacon rolls before church, a summer barbecue, a cake stall, or a few friends round for a coffee morning or anything else you can think of to help raise some funds for KART.

## INVEST IN THE WORK

There are four main ways you can invest

- Cash gifts or Cheques made payable to 'Kirkcaldy Area Reachout Trust'
- Set up a Standing Order at your bank - Royal Bank of Scotland  
Account no. 00217699  
Sort Code 83-29-01
- By text at JustTextGiving (text to 70070 with the message KART07 £x with the amount you would like to donate eg KART07£10).

Also when you shop online by using the [www.easyfundraising.org.uk](http://www.easyfundraising.org.uk) website (charity name Kirkcaldy Area Reachout Trust) you are also able to give to the charity.

*giftaid it*

KIRKCALDY AREA REACHOUT TRUST  
New Volunteer House,  
16, East Fergus Place,  
Kirkcaldy. KY1 1XT

Tel: 07746 373860  
Email: [chris.beattie@kart.me.uk](mailto:chris.beattie@kart.me.uk)  
Web: [www.kart.me.uk](http://www.kart.me.uk)



GENERAL ENQUIRIES  
[enquiries@kart.me.uk](mailto:enquiries@kart.me.uk)

GIVING/FINANCE  
[finance@kart.me.uk](mailto:finance@kart.me.uk)



A Charity registered in Scotland  
Registration Number SC037866

