



## 2021/2022 ANNUAL REPORT



## KIRKCALDY AREA REACHOUT TRUST



*We're not keeping this to ourselves,  
we're passing it along to the next generation -  
God's fame and fortune,  
the marvellous things he has done.*

Psalm 78:4 (MSG)



The Kirkcaldy Area Reachout Trust exists to provide support to schools and churches with the presentation of the Christian message among children & youth in the Kirkcaldy Area.

Our activities in schools contribute to the spiritual development of children by helping them learn about Christian beliefs, see authentic faith in action and understand their own beliefs and the beliefs of others.

## Working in Schools | Partnering with Churches

- Within schools we support the Religious and Moral Outcomes within the Curriculum for Excellence.
- We run Scripture Union Groups and after school activities in Schools providing the opportunity to explore the Bible and the Christian faith.
- We are here to support and work with School Chaplains.
- We are here to support and provide training for local churches as they develop Children and Youth work.

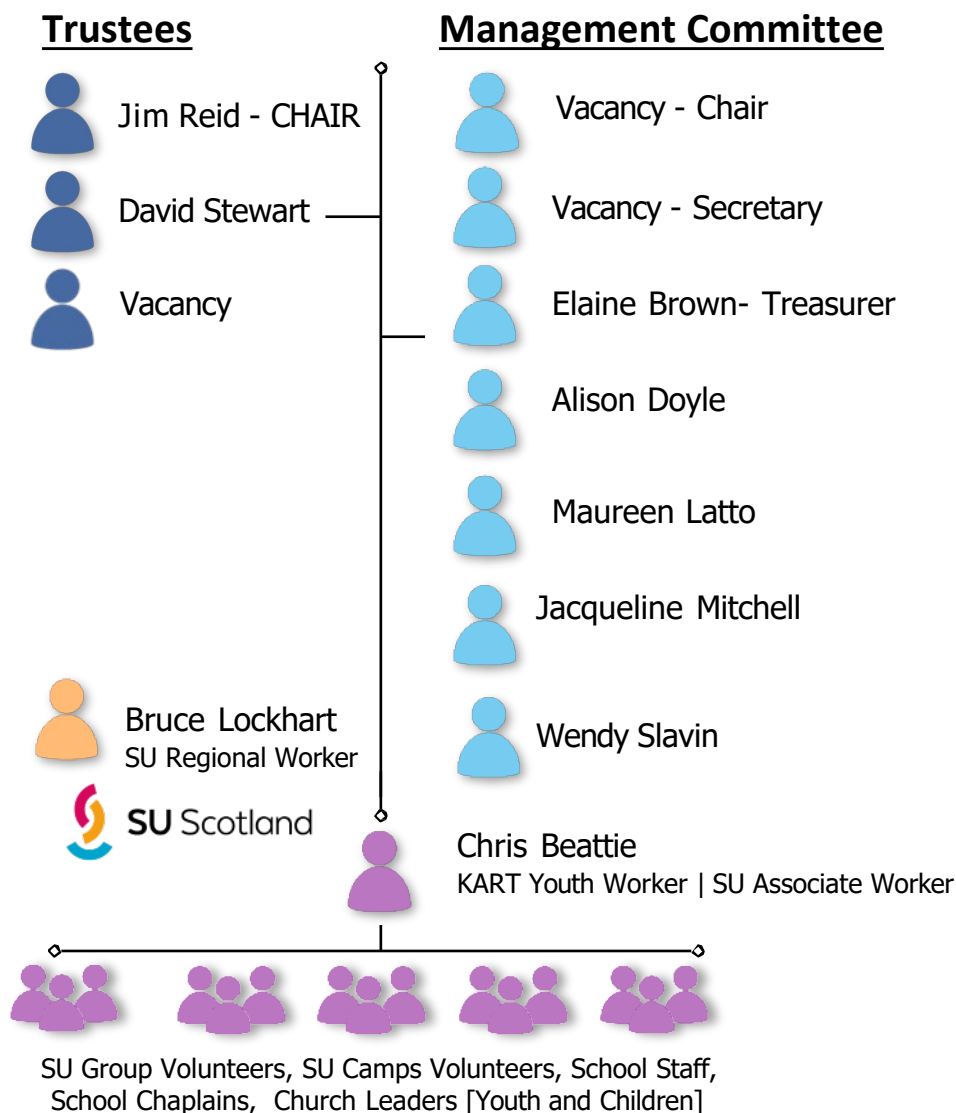
KART is part of the Scripture Union Associate Worker scheme and receives valuable advice and support from Scripture Union Regional Worker Bruce Lockhart.

Whilst Chris Beattie is employed by KART, the work relies heavily on many people volunteering, praying and financially giving. The Trustees are grateful to God for His provision of gifted and willing people who serve on the Management Committee and beyond.



## Organisation Structure

Chris Beattie is the KART Youth Worker and the only employee. The Management Committee and Trustees are all volunteers. They meet around 6 times a year to organise and plan the work of the Trust.



## **Will you consider joining us?**

Do you have some time to spare?

Are you a young person who would like some voluntary  
experience to improve your CV?

Any time you give and whatever commitment you can offer will help to make a huge positive (and spiritual) impact in the lives of children and young people.

## Trustee and Management Report

After the dark days of the past two years when many of our activities have been put on hold it has been great to be able to get back to having in person meetings and activities. Chris's report, below, is brimming full of things happening and things to come which is a great answer to prayer. Since the beginning of the year Chris has changed to working four days a week for KART so that he can dedicate one day of his week to his Church. This has been working well. Please do pray for Chris as he adapts to this new way of working and pray that we ensure that we don't overload him.

Sadly at the end of 2021 we had to say goodbye to Adam Broughton who served as our Chair of the Management Group for over 4 years. Adam introduced Walk Through the Bible to the Trust and guided us through the uncharted covid waters. He has moved to take a position with a frontline Christian Charity called the Rock Foundation. The charity is based in Lincolnshire and Grimsby.



We continue to be very grateful to Bruce Lockhart in his role as Chris's line manager and for his help and insight in running the Trust. As well as KART, Bruce has oversight of the other Trusts in Fife and of course he works in schools, with young people in Perth, Kinross and Fife and SU Holidays, Weekends and Missions. If you want to find out more about Bruce then go to this link:

[tinyurl.com/3k7snrau](https://tinyurl.com/3k7snrau)

We are very grateful to everyone who supports us through prayer, financial giving and volunteering to help.

We hope to overhaul and simplify the structure of KART by becoming a SCIO (Scottish Charity Incorporated Organisation). However to take this forward we need to fill the posts of Management Chair and Secretary. Please can you pray that these posts can be filled. If you would like more information about being involved in this way then please contact David Stewart:

[david.stewart@kart.me.uk](mailto:david.stewart@kart.me.uk)

Sadly, on 14<sup>th</sup> April, we said our goodbyes to Margaret Cunningham who died on 26<sup>th</sup> March 2022. Margaret was one of a small group of people who saw the need for a Christian youth worker in Kirkcaldy to help our local churches bridge the gap between them and young people.

In 2007 the charity Kirkcaldy Area Reachout Trust was set up, and in 2009 Chris Beattie was employed by KART. Margaret was on our Management Committee for many years and along with Jean Wilson and John McIver encouraged local churches and Christians to support the work by regular giving and volunteering.

Margaret was a teacher in English and History first working in Dunbar and later taught at Auchmuty High School, Glenrothes until she retired.

Margaret had a big heart for mission, and we have great memories of the holiday clubs where KART worked alongside Margaret's churches Templehall and Torbain Parish Churches reaching children in the local community.

During her end-of-life care at Glenrothes hospital she had these words written on the white board above her bed 'I want to tell people about Jesus'.

We give thanks for Margaret's vision to employ a youth worker for the Kirkcaldy area and for all the children reached with the Christian message through this. Our thoughts and prayers are with her family at this time.



## KART WORKER REPORT

Chris Beattie



*In that wonderful day you will sing: "Thank the Lord! Praise his name! Tell the nations what he has done. Let them know how mighty he is! <sup>5</sup> Sing to the Lord, for he has done wonderful things. Make known his praise around the world.*

*Isaiah 12:4-5 - (NLT)*

THANK YOU to all who have given towards the work of KART this year, whether through finance, time or prayer your continued support has enabled KART to provide opportunities to serve and share with the children and young people in the Kirkcaldy area. Our work in the last year has continued to focus on the tag line -

## Working in Schools | Partnering with Churches

### Working in Schools

Work in the Schools has become regular since the new year. Particularly with the Walk through the Bible classes in three of our local Schools working within the School Curriculum.

*Walk through the Bible sessions in the Schools:*

- Fair Isle Primary School – Old Testament for P6s and P7s – 128 pupils
- Valley Primary School – Old Testament for P6s and P7s – 80 pupils
- Torbain Primary School – Old Testament for P7s – 79 pupils
- Carleton Primary School (Glenrothes) – Old Testament for P6s – 42 pupils



**Fair Isle P.S.**  
**P6 – 76 Pupils**  
**P7 – 52 Pupils**

**Valley P.S.**  
**P6 – 40 Pupils**  
**P7 – 40 Pupils**



**Torbain P.S.**  
**P7 – 79 Pupils**

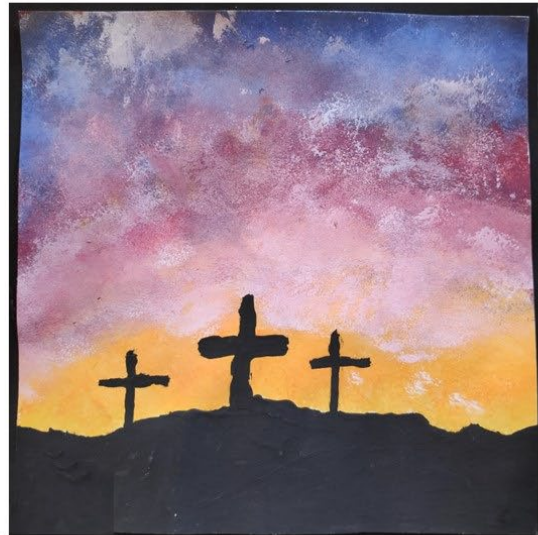


*Light-up Christmas, Colour in Easter and Move* – These three interactive cross-curricular resources were produced for Primary 7 pupils and were put together as a joint initiative of SU Ireland and SU Scotland.

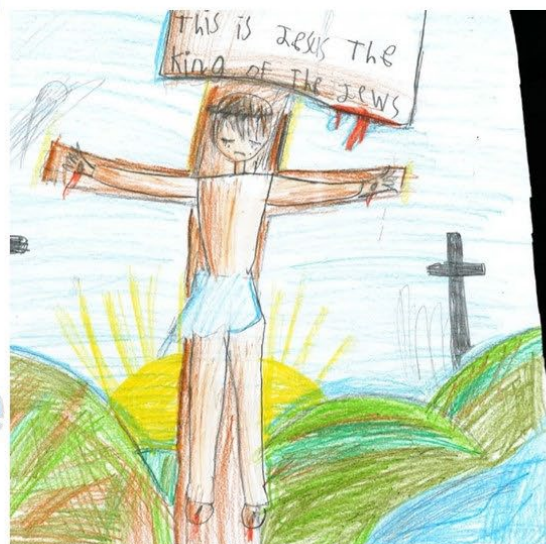


*Easter Picture Competition* – KART ran an Easter picture competition with entries coming from Fair Isle Primary, Valley Primary, Torbain Primary and Kinghorn Primary. With over one hundred entries it was difficult to find a winner. Well done to all who entered.

## 1st Place



## 2nd Place



## 3rd Place



*Videos for School Assemblies* – Working with local chaplains, I managed to produce a number of video resources for Primary Schools and Viewforth High School. The videos were designed to be engaging, fun and memorable. Any feedback we received was positive, whether through pupils or staff.

*Live school assemblies* – In May I was invited to lead my first live assembly since 2019 😊, in Fair Isle P.S. I look forward to visiting some more before the end of the school year.

*Chaplains Meet-up* – The local School Chaplains met up in January over a ZOOM call. We discussed the current school relations, chatted about possible resources and took the time to pray for one another.

*The SU group in Fair Isle P.S.* has restarted and has been running since May, with over 20 pupils signed up. We have been looking at Bible characters who have been through tough times knowing throughout that 'God has got this'.

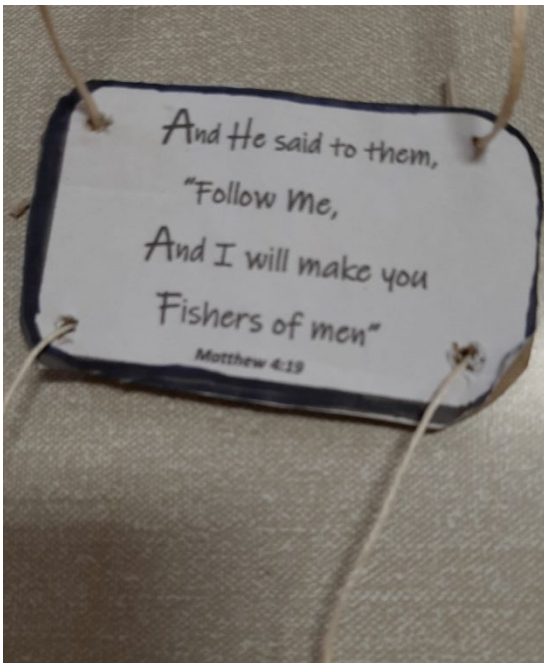
We also ran a table time at Viewforth High School in March 2022. We had over 70 young people chatting and playing some games 😊 It was great to be able to interact with the young people of the school. Another Juice bar is being planned for June.



## Partnering with Churches

The CONNECT group that we set-up last year (for 11-16 year olds of local churches) has continued to meet-up. In December we went Bowling, had a First Aid night in February and had an Easter exploration in April.

In February KART ran an Activity Day which was hosted in Abbotshall Parish Church halls. Seventeen children attended as we looked at being part of a Team.





## Partnering with Churches

KART assisted with the Easter Mission at Templehall & Torbain United Parish Church. The Champions Challenge 'holiday club' took place in April with 40 children attending over the three days.



Easter Mission Team

Over the days there were plenty of games, challenges, crafts, drama, songs and dancing for us all to share in. We also spent time exploring the Bible using the SU material 'Champions Challenge' which looked at the events leading up to Jesus' death and resurrection, the children gave good responses as we explored the stories together. Each day after the club the children and parents were invited for lunch which proved very successful and helpful in building local connections.





At the SU Scotland Weekend away in February, ten young people from the Kirkcaldy area enjoyed their experience. We spent time looking at Jesus being the ultimate superhero and had fantastic activities like crafts, archery, trail biking and the ropes course.



### KART Multi-Activity Camp – 9-12<sup>th</sup> July 2022

Our annual summer camp is back this year! We look forward to welcoming 24 children to Lendrick Muir for an action packed 3 days. We are thankful that so many local children have signed up and we pray that the time away gives the campers an amazing experience.



[www.suholidays.org.uk](http://www.suholidays.org.uk)

A great start to 2022 and hopefully things will continue to grow, we will continue to partner with local churches and use new methods to maintain the importance of exploring the significance of Jesus in all of our work.

*We will tell the next generation about the glorious deeds of the LORD,  
about His power and the mighty wonders He has done.*

*Psalm 78:4*

## KIRKCALDY AREA REACHOUT TRUST

### Treasurer's Report Year Ended 31<sup>st</sup> March 2022

Our financial year ended with our current account balance of £20,827.52 and £15,016.28 in our reserve account. Our total income for the year is £32,047.63 and our expenditure is £32,804.76 giving us a deficit of £757.13.

#### Our income is made up as follows

GRANTS/TRUSTS	£
<ul style="list-style-type: none"><li>Presbytery Ministry &amp; Mission via Kinghorn PC</li><li>Angela Lynsey MacDonald Trust</li><li>M.E.S Paterson Charitable Trust</li><li>Souter Charitable Trust</li></ul>	<ul style="list-style-type: none"><li>2,000.00</li><li>1,500.00</li><li>2,000.00</li><li>3,000.00</li></ul>
	<b><u>8,500.00</u></b>
<b>JOB RETENTION SCHEME</b>	<b><u>5,931.12</u></b>
<b>CHURCH PLEDGES</b>	
<ul style="list-style-type: none"><li>Newcraigs Evangelical</li><li>Kinghorn Parish</li></ul>	<ul style="list-style-type: none"><li>2,400.00</li><li>1,000.00</li></ul>
	<b><u>3,400.00</u></b>
<b>DONATIONS BY REGULAR GIVING</b>	<b><u>8,076.00</u></b>
<b>FUNDRAISING</b>	
<ul style="list-style-type: none"><li>Easyfundraising</li><li>Kiltwalk</li><li>Amazon Smile</li><li>Donation from Burntisland/Kinghorn</li></ul>	<ul style="list-style-type: none"><li>47.94</li><li>3,477.71</li><li>5.00</li><li>79.43</li></ul>
	<b><u>3,610.08</u></b>
<b>DONATIONS FROM INDIVIDUALS</b>	<b><u>240.00</u></b>
<b>MISC</b>	
<ul style="list-style-type: none"><li>Gift Aid reclaimed</li><li>Bank Interest (reserve account)</li><li>Bank Interest</li><li>Clubs and Camps (St Bryce Soup Lunch £225)</li><li>Farewell Gift Donations Adam</li></ul>	<ul style="list-style-type: none"><li>1,533.00</li><li>1.51</li><li>10.92</li><li>645.00</li><li>100.00</li></ul>
	<b><u>2,290.43</u></b>
<b>TOTAL INCOME</b>	<b><u>32,047.63</u></b>

## **EXPENDITURE**

Our outgoings for the year are £32,804.50. Payments associated with KART's activities are broken down as follows.

Salary, NI, Pension, Insurance	25,687.14
Worker's expenses	99.90
Office rent and phone	1,191.12
Youth Events and Camps (covid)	526.34
SU Associate Worker Fee	2,500.00
Other expenses and overheads:	2,800.26
(Telephone, stationery, post, public liability & charity ins, Printing, photocopying, resources, auditor fee, website Equipment consumables for youth events)	
<b>TOTAL EXPENDITURE</b>	<b><u>32,804.76</u></b>

During financial year ending 31<sup>st</sup> March 2022 we were successful and grateful for grants totaling £8,500 from the Souter Charitable Trust, Lynsey McDonald Trust, and M.E.S Paterson Charitable Trust. The Kilt Walk raised an amazing £3,477. In December we competed amongst hundreds of applicants for a mission grant from Presbytery Fife. Praise God we were one of the few successful applicants and won a grant of £10,000 paid monthly £1,000 monthly commencing February 2022. We are so grateful for your support voting for KART.

### **Proposed Budget for 2022/2023**

Our budget for 2022/2023 shows a deficit of £3855. We expect our income to be £28,215 and our expenditure to be £32,070.00. We will continue to apply for grants from trusts to bridge our deficit, but this cannot be relied upon as we are competing against a multitude of Charities. We hope to continue with our popular fundraising with support from local churches. This year we have won an award from a supporter who applied to their employer on our behalf. Angela Lynsey MacDonald Charitable Trust have pledged £1,500 this year and next year for which we are extremely grateful. KART currently has 26 faithful supporters whose donations amount to 25% of this year's income. We are uncertain of continued funding from Presbytery Fife, and we rely heavily on grants therefore we appeal to local churches and Christians to consider partnering with us financially enabling us to continue reaching out with the message of God's love to our local young people.



## A report from the Finance Team

Last year our budget showed a deficit of £11905 and at the end of our financial year (and giving thanks with a grateful heart) our shortfall was £800.

We have been awarded a grant of £1500 for 3 years from Angela Lynsey Macdonald Trust, received £2000 from M.E.S Paterson's Charitable Trust and £3000 Souter Charitable Trust. We are so grateful to Newcraigs Evangelical Church and Kinghorn PC who continue to pledge yearly to KART.

Whilst we can no longer rely on a grant for Presbytery of Fife, we were one of the few successful applicants from their Mission Grant which people were invited to vote for their causes. We were awarded a grant of £1,000 for 10 months.

We have anticipated a shortfall this year of approximately £4000.

There's no doubt that hard times are ahead for many, and we hope to have found an exciting and fun way to offer more financial steadiness for this year. Please read on as we need your help.

The next few pages in our annual report explain our 'Fun-Raising' ideas and we would appreciate you taking up one of the many challenges on offer and asking your circle of friends and family to sponsor you for KART. Why not discuss the ideas with your church and come up with something together that is right up your street?

We continue to make the case for regular contributions no matter how small which offer more stability for us looking ahead. Often, I hear 'I want to donate, but something happens, and it's forgotten'.

God bless and thank you so much for your faithfulness in so many ways.



**ALLCHURCHES TRUST LIMITED®**  
OWNERS OF ECCLESIASTICAL INSURANCE GROUP



**Garfield Weston**  
FOUNDATION

## Fun- Raising – Maureen Latto

**We have 2 great ways to fundraise. Which one will you choose?**

KART thanks you from the bottom of our hearts for your massive support over the years. We rely fully on pledges, donations, grants, and fundraising. Without your generosity over the years, we wouldn't be able to continue sharing God's love with the young people of our local area.

**1<sup>st</sup> FUN- RAISER:** We would love you or someone from your church to join us in



### Background

During the pandemic in 2021 Chris and I took part in Scotland's Virtual Kiltwalk. - £2318 was raised in donations. Sir Tom Hunter and The Hunter Foundation generously topped this up by a HUGE 50% making the total raised £3477. We had an awesome time, and we are inviting you either on your own, or with friends and family joining you for moral support, to take part in this year's Scotland's Virtual Kilt Walk.

It's really quite simple, you register to take part, please choose [Kirkcaldy Area Reachout Trust](#) as your chosen charity to receive all donations.

### What is Scotland's Virtual Kiltwalk?

The exciting thing is you don't need to walk. You can choose to complete the virtual Kiltwalk with others keeping you company or you can do something completely different – run, cycle or swim, dance, cartwheels, kayak! (Any distance you wish however short or long)

This is a unique opportunity to raise funds where every £1.00 you raise 50p will be added by The Hunter Foundation. This generous added bonus helps Charities at this very difficult time. *The person aged 16 and over being sponsored pays £15 to participate, and a child aged 5-15 pays £7.50. This is paid to the Kiltwalk when registering to take part.*

### Where?

A virtual Kiltwalk is a walk that is completed in your local area, or further afield if you wish. You can explore the local countryside, cycle local streets, or have your fundraising event in your own back garden. You could plan a walk with pit stops visiting local family and friends and get a boost of moral support!

### Challenge Ideas

You have the freedom to take on ANY challenge! You can stick with walking or change it up to any activity you wish that suits your age and ability. Wear a bit of tartan and feel free to share your pictures with us. You can even choose the length of your activity. Last year I did a bit of walking, swimming and cycling over the weekend joined by friends and family for support. Chris did some running and did walks assisted by his wife and beautiful wee girls.



**More ideas:** Walk, run, swim, paddle board, scooter, wheelchair, dance, cycle, boogie, trampoline, skip, hill walk, walk up and down your stairs, why not do your challenge in fancy dress?? Ask your family and friends to kindly donate a few £1's and it soon mounts up. Get creative and go for it! Create your own Kiltwalk Challenge to make it more fun. We'd love to see what you get up to so feel free to share your photos with us.

If you wish to take part, please contact me so I can ensure you are given the information needed and how to register and make KART the beneficiary of your fundraising. [finance@kart.me.uk](mailto:finance@kart.me.uk) or 07961 733120 Maureen Latto

For more information check out <https://thekiltwalk.co.uk/scotlandsvirtual> go to Events and click on Virtual Kilt Walk.



## 2<sup>ND</sup> FUN – RAISER

This November will amazingly mark the 16<sup>th</sup> year since KART was founded, and your support to help us fundraise would be fantastic to help us sustain our work into the future. Would you take part and be creative in our:

### onepointsix KART CHALLENGE

All you need to do is decide upon an activity based around the numbers 1.6 or 16 or 160 (celebrating us being 16) as you feel suits your talents and ability and complete it sometime this year. Complete it alone, or in a group or team. We can supply sponsorship sheets should you wish to use them.

Every step or skip and pound you raise is helping us to continue sowing seeds in the hearts of the next generation: **Rom 10:<sup>14</sup> But how can they call on him to save them unless they believe in him? And how can they believe in him if they have never heard about him? And how can they hear about him unless someone tells them? <sup>15</sup> And how will anyone go and tell them without being sent?**

Here are some fantastic ideas for unique fundraising events, and don't forget the old faithful traditional ones too which we all love and have missed. *Keep safe and have a blessed time*

Go wet and wild with 16 friends to one of our beaches or organise a picnic in one of our beautiful woodlands.

Invite 16 friends to a sausage sizzle

Have a fancy-dress garden party for 16 people.

Cycle 16 miles around Kirkcaldy's cycle paths.

Lose 16lbs

Walk 1.6 miles for 16 days.

Plan an evening with musicians and have a Jam night with 16 types of nibbles to enjoy throughout the evening. Take a kick or a swing. Put together a soccer tournament (16 players) golf/darts/bowling or rounder event with your work friends or connections.

Organise a Country Western evening lasting 1.6 hrs (96 minutes) and why not ask attendees to come dressed country style for the occasion.

Holler a Hymn evening for 1.6 hrs

Sell 16 items you have created

Run, cycle, walk skateboard, wheelchair, around your local park 16 times (spread it over a few days if necessary)

Have a craft evening on the 16<sup>th</sup> of a month.

Sell 16 jars of jam or chutney.

Host a Hymn-a-oke evening for 1.6 hrs

Organise a church fair with 16 tables of wares

Silent auction of 16 donated items.

16 hours of press ups over a month

Do 16 laps (by any means) around your garden or street.

Hold a puzzle event like an escape room or a quiz evening. Get gaming, borrow some consoles and TV's and have a gaming event on 16<sup>th</sup> day of any month.

Host a Chari-Tea event for 1.6 hrs (96 minutes)

## EVENTS FOR 2022



### The KART Family Fun Day

25th June @ Kirkcaldy Rugby Club  
Beveridge Park

**10-12noon - Children's  
Fab Club (P1-7)**

Games Bible Stories  
Challenges Crafts

**To register:**  
<https://tinyurl.com/25cnevr6>

**12-2pm - Family Fun**

Family Games Treasure Hunt  
Barbecue

The whole event is free however  
donations will be welcome on  
the day

**1-3pm - High School  
Frolics (P7-S6)**

Archery Earth ball  
Tag Bible Challenge

**To register:**  
<https://tinyurl.com/4d98v8xv>

KART-Registered Charity No. SC037866

Bring your **RME**  
**lessons alive** with an  
exciting **FREE resource**  
for your school



### The Life Exhibition

The story of Jesus - Kids style

*What out for the date*



[www.lifeexpo.org.uk](http://www.lifeexpo.org.uk)

# ARE YOU INTERESTED IN HELPING KART?

- Serve and support on the Management Committee. Members serve for 3 years.
- Help establish, support or lead an SU group in a school near you. We are always looking for volunteers to work with Chris.
- Become a 'Prayer Champion' in your church. We would like to have every school prayed for on a regular basis. Keep your church up to date with news and be part of a growing network of prayer.
- How about having a soup lunch after church, bacon rolls before church, a summer barbecue, a cake stall, or a few friends round for a coffee morning or anything else you can think of to help raise some funds for KART.

## INVEST IN THE WORK

There are four main ways you can invest

- Cash gifts or Cheques made payable to 'Kirkcaldy Area Reachout Trust'
- Set up a Standing Order at your bank - Royal Bank of Scotland  
Account no. 00217699  
Sort Code 83-29-01
- By text at JustTextGiving (text to 70070 with the message KART07 £x with the amount you would like to donate eg KART07£10).

Also when you shop online by using the [www.easyfundraising.org.uk](http://www.easyfundraising.org.uk) website (charity name Kirkcaldy Area Reachout Trust) you are also able to give to the charity.

*giftaid it*

KIRKCALDY AREA REACHOUT TRUST  
New Volunteer House,  
16, East Fergus Place,  
Kirkcaldy. KY1 1XT

Tel: 07746 373860  
Email: [chris.beattie@kart.me.uk](mailto:chris.beattie@kart.me.uk)  
Web: [www.kart.me.uk](http://www.kart.me.uk)



GENERAL ENQUIRIES  
[enquiries@kart.me.uk](mailto:enquiries@kart.me.uk)

GIVING/FINANCE  
[finance@kart.me.uk](mailto:finance@kart.me.uk)



A Charity registered in Scotland  
Registration Number SCO37866

